

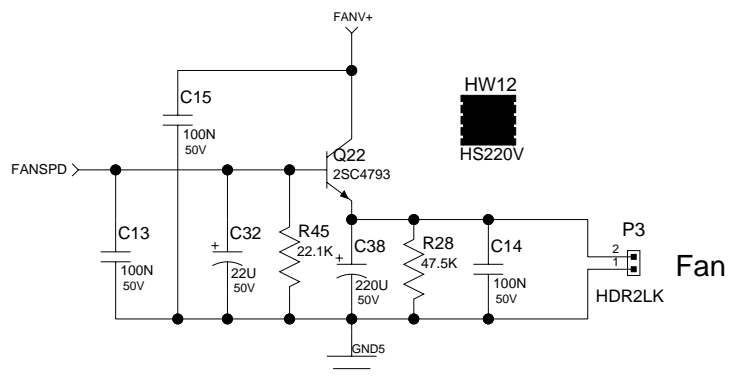
Plate Voltage  
P8 SPD250  
P7 SPD250

32101297

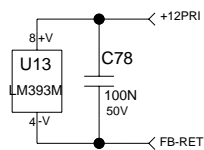
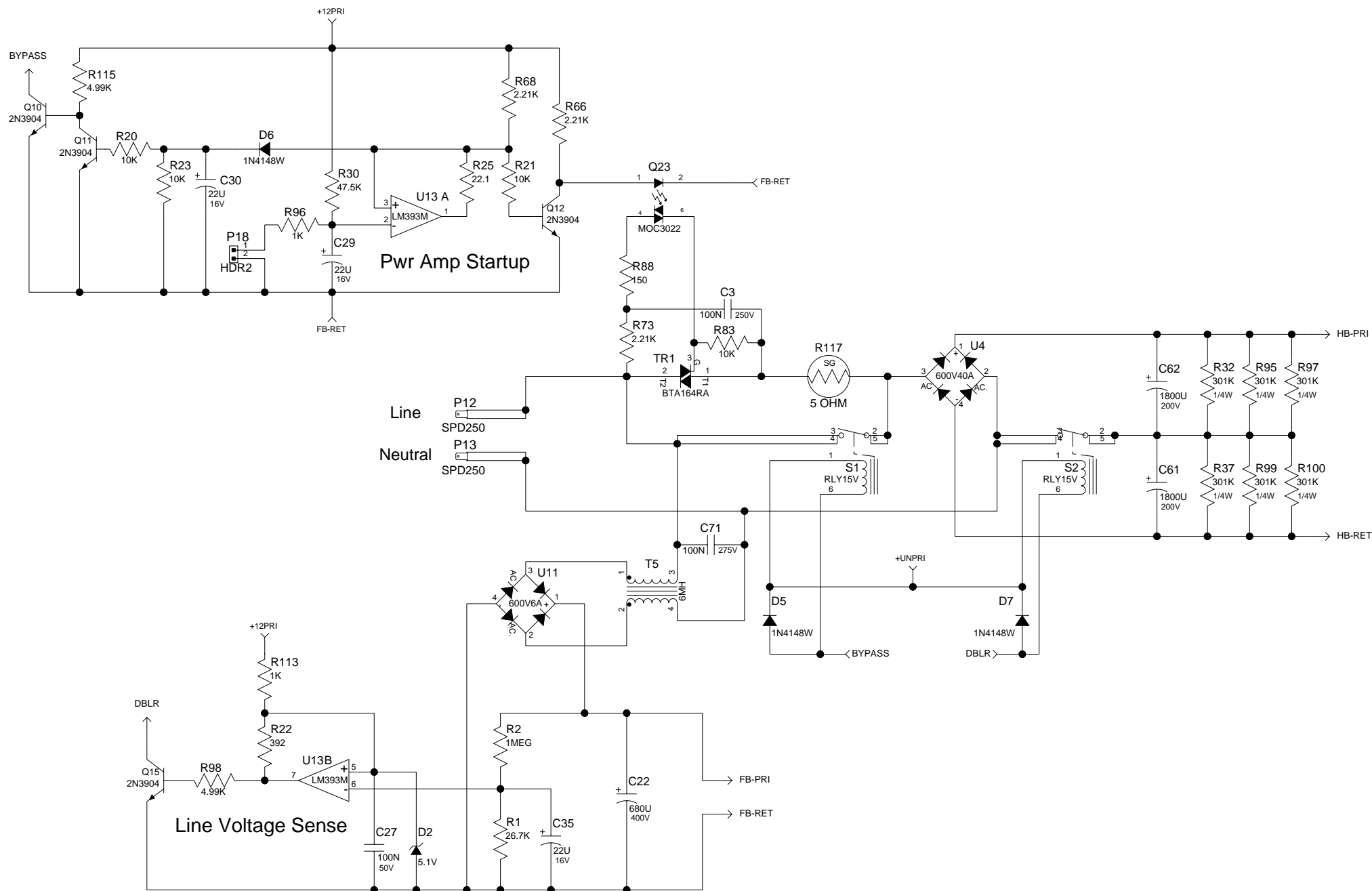
**PEAVEY**  
Peavey Electronics Corp.  
P. O. Box 2898  
Meridian, MS 39301

Title: **PWRSPPLY**  
Sheet Title: **VB-3 Pro**

C Sheet 2 of 4 Date: 5-15-2008\_16:46



C	Sheet 3 of 4	Date: 5-15-2008_16:46
---	--------------	-----------------------

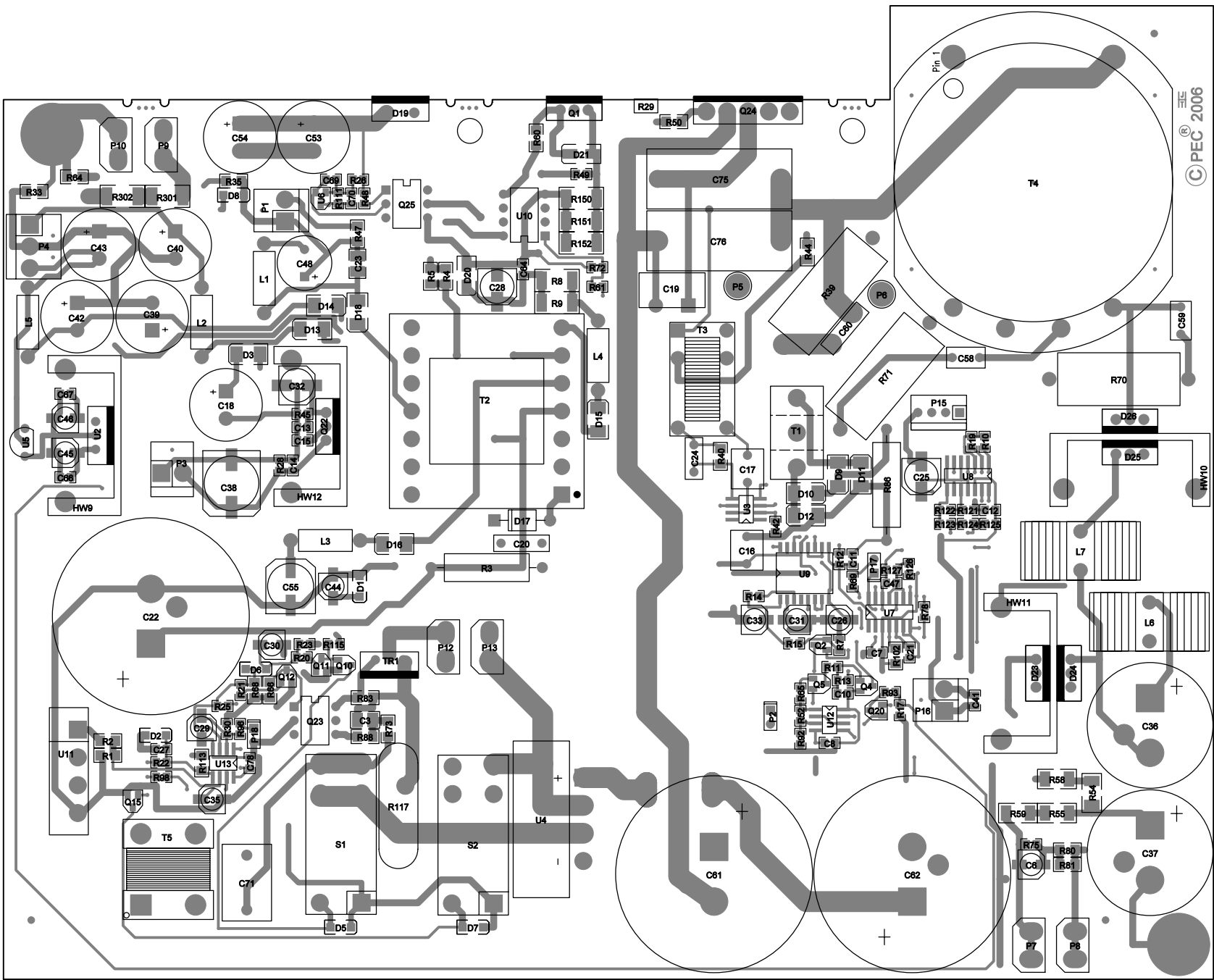


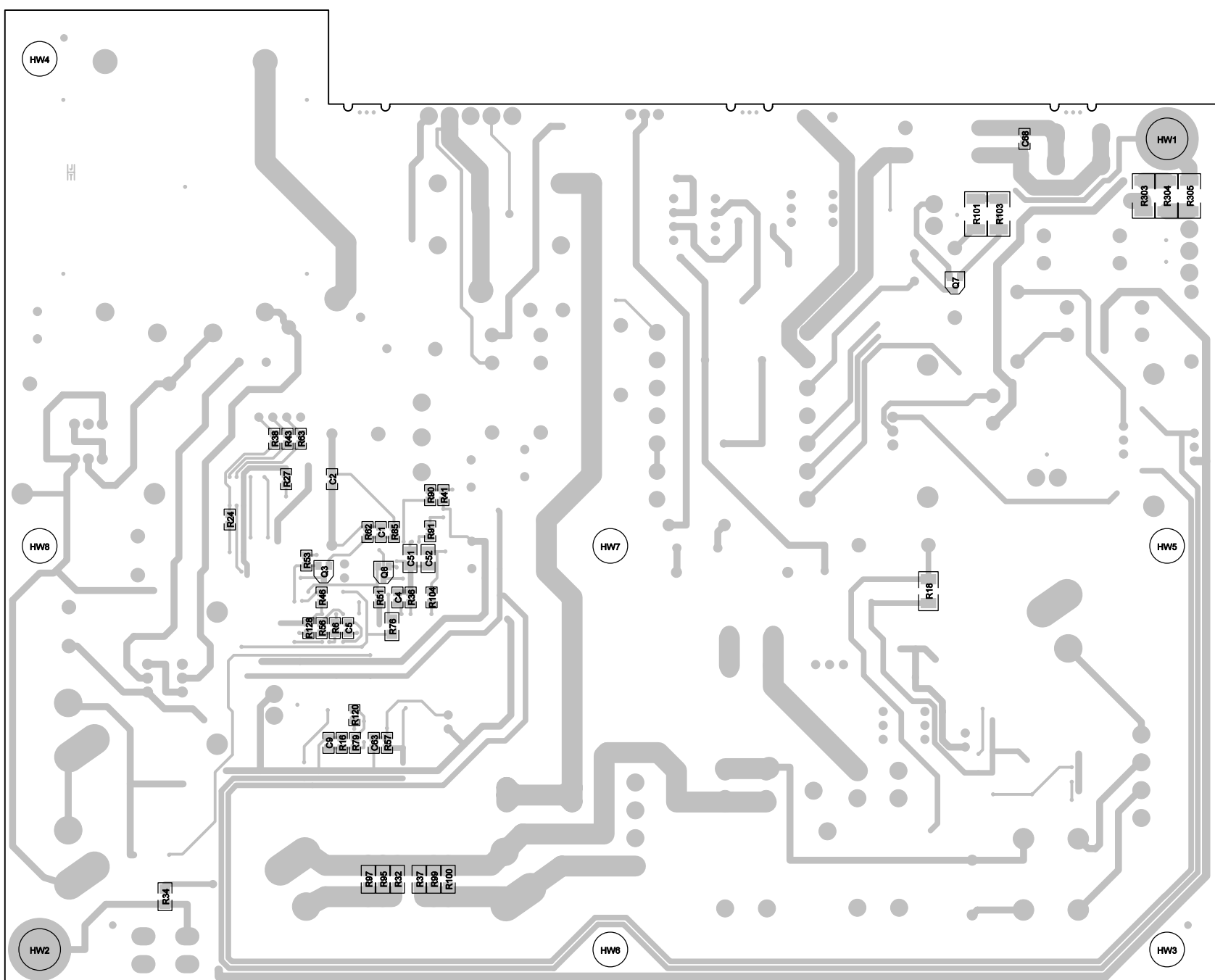
HW3 HW4 HW5 HW6 HW7 HW8  
SO.375 SO.375 SO.375 SO.375 SO.375 SO.375

32101297



Title: PWRSPPLY  
Sheet Title: VB-3 Pro





# BILL OF MATERIAL REPORT

-----

REPORT DATE/TIME: 5/19/2008 9:27:11 AM

BOARD NAME: VB-3 POWER SUPPLY      ASSEMBLY LEVEL NUMBER: 29096050

PROJECT NUMBER: P0600064      DESIGNER: JTH

Qty.	Part #	Description	Reference Designators
-----			
--			
4	30200010	0.0      1/4W 5% MF 1206	R33 R34 R35 R64
2	30200037	2.2M      1/4W 5% MF 1206	R80 R81
2	30200047	1K      1/4W 1% MF 1206	R76 R113
1	30200051	10K      1/4W 1% MF 1206	R83
2	30200056	30.1K      1/4W 1% MF 1206	R4 R5
1	30200067	26.7K      1/4W 1% MF 1206	R1
1	30200099	47.5K      1/4W 1% MF 1206	R47
1	30200150	2K      1/4W 1% MF 1206	R102
2	30200167	20K      1/10W 1% MF 0805	R26 R57
9	30200173	4.99K      1/10W 1% MF 0805	R38 R43 R52 R63 R65 R72 R98 R104 R115
12	30200174	10K      1/10W 1% MF 0805	R6 R11 R12 R13 R14 R15 R20 R21 R23 R46 R125 R128
1	30200175	1.1K      1/10W 1% MF 0805	R56
1	30200181	100      1/10W 1% MF 0805	R69
1	30200184	392      1/10W 1% MF 0805	R22
5	30200188	1.00K      1/10W 1% MF 0805	R17 R90 R91 R96 R127
1	30200189	1.37K      1/10W 1% MF 0805	R92
2	30200194	100K      1/10W 1% MF 0805	R41 R42
3	30200198	499      1/10W 1% MF 0805	R48 R49 R78

3	30200202	3.32K	1/10W 1% MF 0805	R7 R51 R53
2	30200205	47.5K	1/10W 1% MF 0805	R28 R30
1	30200209	9.09K	1/10W 1% MF 0805	R36
3	30200214	2.21K	1/4W 1% MF 1206	R66 R68 R73
1	30200225	1.0M	1/4W 1% 1206	R2
2	30200237	10K	1W 1% MF 2512	R101 R103
5	30200238	22	1W 5% MF 2512	R301 R302 R303 R304 R305
2	30200249	3.01K	1/10W 1% MF 0805	R121 R122
1	30200251	4.75K	1/10W 1% MF 0805	R111
1	30200256	22.1K	1/10W 1% MF 0805	R45
1	30200259	39.2K	1/10W 1% MF 0805	R62
5	30200267	2.21K	1/10W 1% MF 0805	R10 R16 R19 R24 R120
1	30200273	3.92K	1/10W 1% MF 0805	R123
1	30200328	6.81K	1/10W 1% MF 0805	R93
2	30200332	61.9K	1/10W 1% MF 0805	R27 R85
1	30200334	15.0K	1/10W 1% MF 0805	R61
1	30200340	150	1/4W 1% MF 1206	R88
4	30200348	10	1/4W 1% MF 1206	R40 R44 R50 R60
1	30200358	10	1/2W 1% MF 2010	R18
1	30200374	4.32K	1/10W 1% MF 0805	R126
2	30200375	6.19K	1/10W 1% MF 0805	R79 R124
1	30200386	13.3K	1/10W 1% MF 0805	R75
2	30200388	150	1W 1% MF 2512	R8 R9
6	30200394	301K	1/4W 1% MF 1206	R32 R37 R95 R97 R99 R100
4	30200414	100K	1/2W 5% MF 2010	R54 R55 R58 R59
3	30200418	1	1W 1% MF 2512	R150 R151 R152



1	30200495	22.1	1/10W	1%	MF	0805	R25
1	30240210	5	OHM	12A	INRUSH	LIMITER	R117
1	30241255	30K	THERMISTOR	PROBE	W/LEADS		R29
1	30250080	100	2W	5%	MO	AXL	R86
1	30250081	22K	2W	5%	MO	AXL	R3
2	30300069	0.22UF	50V	10%	X7R	1206	C51 C52
1	30300080	10UF	16V	20%	EL	SMT4	C26
3	30300084	2.2UF	35V	20%	ELN	SMT4	C6 C31 C33
1	30300086	10PF	50V	5%	NPO	0805	C1
2	30300088	100PF	50V	5%	NPO	0805	C11 C21
1	30300090	470PF	50V	5%	NPO	0805	C2
9	30300093	0.1UF	50V	10%	X7R	0805	C41 C47 C63 C64 C66 C67 C68 C69 C70
1	30300097	100UF	25V	20%	EL	SMT8	C55
1	30300098	220UF	50V	20%	EL	SMT10	C38
2	30300099	22UF	50V	20%	EL	SMT6	C28 C32
11	30300121	0.1UF	50V	5%	X7R	0805	C5 C7 C8 C9 C10 C12 C13 C14 C15 C27 C78
1	30300147	680PF	50V	5%	NPO	0805	C4
1	30300152	100UF	16V	20%	EL	LOZ SMT6	C25
2	30300204	0.1UF	250V	10%	X7R	1210	C3 C23
6	30300237	22UF	16V	20%	EL	SMT4	C29 C30 C35 C44 C45 C46
5	30320186	1000UF	35V	20%	EL	RAD	C18 C39 C40 C42 C43
1	30320266	10UF	250V	20%	EL	RAD	C48
2	30320320	220PF	1000V	20%	CER	RAD	C58 C59
2	30320335	3300UF	16V	20%	EL	RADH	C53 C54
2	30320512	220UF	350V	20%	EL	SNPHT3	C36 C37

2	30320552	1800UF 200V 20% EL SNPHT3	C61 C62
1	30320556	0.1UF 275V 10% "X" RADH	C71
1	30320569	470PF 400V 20% PP RADH	C20
1	30320571	220PF 400V 20% PP RADH	C60
1	30320592	680UF 20% 400V ELECTROLYTIC CA	C22
1	30330113	0.1UF 100V 10% PPS RAD	C24
2	30330157	1.0UF 400V 5% PP RAD	C75 C76
2	30330158	1UF 63V 5% PES RAD	C16 C17
1	30330162	2200PF 500V 5% PE RADH	C19
1	30400016	79L15 -15V VREQ TCLOCKO92	U5
1	30400026	1A 600V 35N -DIODE T&R	D17
1	30400099	TRIAC 400V 16A TO220 INS	TR1
1	30400173	CNY17-3F BASELESS OPTO	Q25
1	30400318	7815F +15V INS TO-220F HOR	U2
1	30400605	BR RECT INLINE 600V 6A	U11
1	30400635	MOC635A OPTO COUPLER/ISO	Q23
1	30400994	FQPF8N80C N-CH MOSFET	Q1
1	30401003	200V,15A ULTRA FAST DIODE	D19
1	30401377	NCP11377BP PWM CONTROLLER	U10
1	30404006	BR RECT INLINE 600V 40A	U4
1	30404793	2SC4793 NPN TO-220 230V	Q22
4	30406060	FFPF60SA60DS 600V 8A SERIES DI	D23 D24 D25 D26
1	30409186	FII30-06D IGBT PHASE LEG ISOP	Q24
2	30418110	LM339 QUAD COMPARATOR SMT	U7 U8
10	30418135	2N3904 NPN SOT23	Q2 Q3 Q4 Q5 Q8 Q10 Q11 Q12 Q15 Q20
1	30418136	MMBT5401 PNP SOT23	Q7
1	30418166	ZR431F ADJ SHUNT REG SMT	U6

1	30418272	1A 600V FAST RECOVERY RECT	D18
2	30418274	LM393M DUAL COMPARATOR	U12 U13
3	30418328	1N4148W SWITCHING DIODE	D5 D6 D7
9	30418374	MURS120T3 - SMT - SMB PKG	D3 D9 D10 D11 D12 D13 D14 D15 D16
1	30418389	5.1V ZENER (SOD123)-SMT	D2
1	30418402	12V ZENER (SOD123)-SMT	D1
2	30418504	15V 1.5W ZENER SMA	D20 D21
1	30418610	IXDI502SI DL LOW-SIDE MOSFET D	U3
1	30418642	UC3825 PWM CONTROLLER SO-16W	U9
1	30418693	68V 500MW ZENER DIODE SOD123	D8
1	30500041	PA1081 FLYBACK TRANSFORMER	T2
1	30500119	VB-3 HALF-BRIDGE XFMR	T4
2	30500156	100UH 2.6A V-TOROID INDUCTOR	L6 L7
1	30500558	SMALL GATE DRIVE TRANSFORMER	T3
1	30510005	6MH COMMON-MODE CHOKE	T5
5	30519913	15 MICRO H 20% INDUCTOR	L1 L2 L3 L4 L5
1	30551718	CURRENT SENSE TOROID	T1
1	30651206	BLK 16G 5" CPTX2	P6
4	30900629	AAVID VER TO220 HEATSINK	HW9 HW10 HW11 HW12
2	30900779	STND .375 T4-40,SW,NB,ST	HW1 HW2
6	30901890	STND .375 T4-40SW,AL,ST	HW3 HW4 HW5 HW6 HW7 HW8
2	31322371	RELAY 12V SPNO 16A SEALED	S1 S2
1	31600254	50 5W 10% WW AXLH LS	R39
2	31600261	150 5W 10% WW AXLH SL	R70 R71
6	33716194	SPADE .250 PC MNT .093	P7 P8 P9 P10 P12 P13
1	33717015	4 HDR V SR .100" TIN LK	P15

3	33717122	2	HDR V SR .100" TIN	P2 P17 P18
3	33719107	2	HDR V SR .156" TIN LK	P1 P3 P16
1	33719111	3	HDR V SR .156" TIN LK	P4
1	CABL13817	16GA W/CRIMP TERM 73713817		P5
6	FIDUCIAL	????????????????????????????		FID1 FID2 FID3 FID4 FID5 FID6

-----  
 END OF BILL OF MATERIAL REPORT  
 -----