

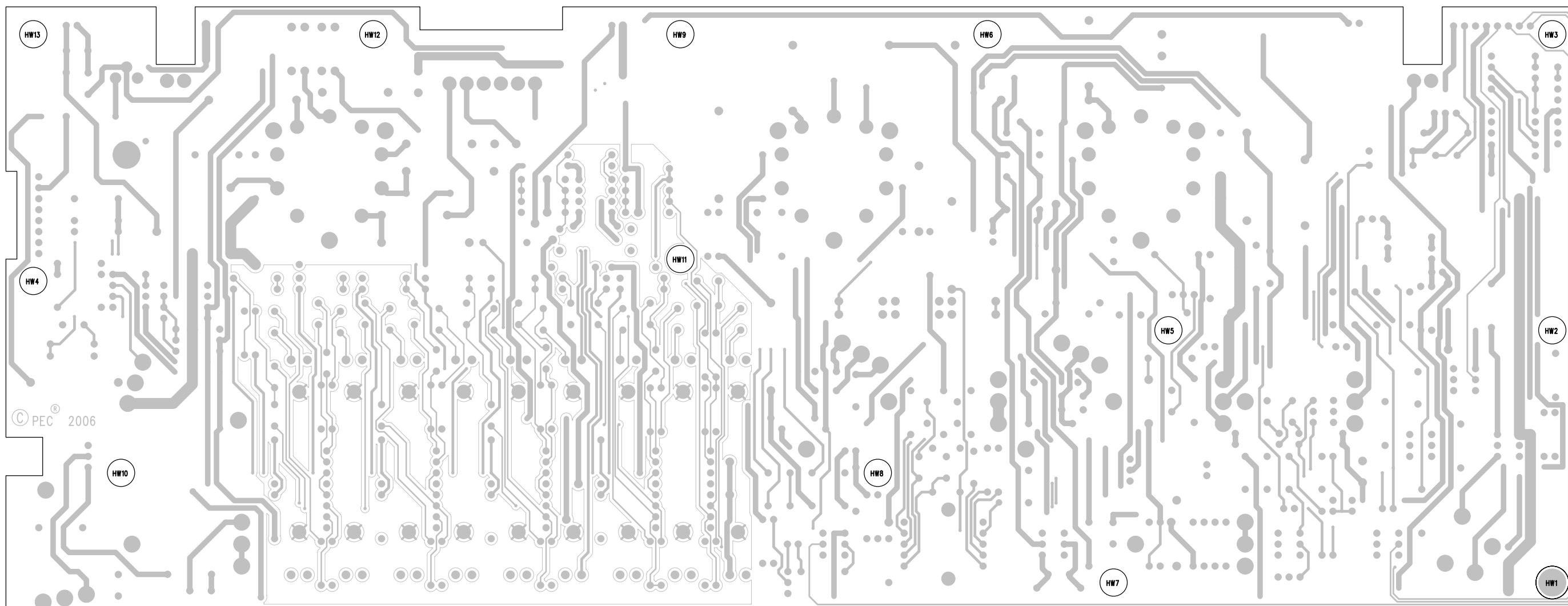
Peavey Electronics Corp.
P. O. Box 2898
Meridian, MS 39301

Title: VB-3

Sheet Title: GRAPHIC EQ

B	Sheet 3 of 4	Date: 2-12-2009_15:25
---	--------------	-----------------------





BILL OF MATERIAL REPORT

REPORT DATE/TIME: 2/16/2009 9:10:09 AM

BOARD NAME: VB-3 Pre Amp

ASSEMBLY LEVEL NUMBER: 29096231

PROJECT NUMBER: P0600064

DESIGNER: FJE - 32101496

Qty.	Part #	Description	Reference Designators
------	--------	-------------	-----------------------

--

1	30210000	1K 1W 5% MO AXL	R39
2	30210004	47K 1W 5% MO AXL	R84 R85
1	30210006	4700 1W 5% MO AXL	R134
4	30210007	1500 1W 5% MO AXL	R18 R20 R23 R25
3	30210017	100K 1W 5% MO AXL	R28 R83 R88
1	30210026	470 1W 5% MO AXL	R7
4	30240013	270 1/4W 5% CF AXL	R1 R2 R3 R4
1	30240014	330 1/4W 5% CF AXL	R118
1	30240016	680 1/4W 5% CF AXL	R129
6	30240017	1K 1/4W 5% CF AXL	R9 R10 R11 R12 R13 R14
9	30240018	1500 1/4W 5% CF AXL	R81 R86 R87 R92 R93 R94 R95 R96 R97
1	30240019	820 1/4W 5% CF AXL	R103
4	30240021	2700 1/4W 5% CF AXL	R17 R19 R41 R42
2	30240022	3300 1/4W 5% CF AXL	R98 R99
2	30240023	4700 1/4W 5% CF AXL	R21 R22
1	30240024	6800 1/4W 5% CF AXL	R117
8	30240025	10K 1/4W 5% CF AXL	R37 R45 R62 R63 R64 R65 R68 R128

1	30240027	15K	1/4W	5%	CF	AXL	R5
5	30240029	22K	1/4W	5%	CF	AXL	R26 R27 R69 R76 R77
4	30240031	47K	1/4W	5%	CF	AXL	R24 R125 R126 R127
1	30240033	82K	1/4W	5%	CF	AXL	R32
4	30240034	100K	1/4W	5%	CF	AXL	R70 R89 R121 R124
1	30240035	150K	1/4W	5%	CF	AXL	R75
2	30240036	220K	1/4W	5%	CF	AXL	R6 R91
3	30240038	470K	1/4W	5%	CF	AXL	R71 R72 R73
7	30240039	1M	1/4W	5%	CF	AXL	R48 R50 R90 R130 R131 R132 R133
1	30240040	2.2M	1/4W	5%	CF	AXL	R16
8	30240049	8.2K	1/4W	5%	CF	AXL	R43 R44 R58 R61 R105 R106 R107 R108
13	30240064	3.9M	1/4W	5%	CF	AXL	R47 R51 R52 R53 R54 R55 R56 R57 R100 R119 R120 R122 R123
1	30240094	4.7	1/4W	10%	FP	AXL	R40
1	30240101	DUAL LIGHT DEP. RESISTOR					U2
1	30240114	9.09K	1/4W	1%	MF	AXL	R109
4	30240130	82.5K-1/4W---1%---MF--T&R					R110 R111 R112 R113
3	30240144	90.9K	1/4W	1%	MF	AXL	R101 R102 R104
7	30240151	100K	1/4W	1%	MF	AXL	R35 R36 R38 R46 R49 R74 R80
4	30241020	7500	1/4W	1%	MF	AXL	R29 R30 R31 R33
1	30241070	68.1K	1/4W	1%	MF	AXL	R34
1	30241077	1K	1/4W	1%	MF	AXL	R8
2	30241093	3.9K	1/4W	5%	CF	AXL	R66 R67
2	30241094	240K---1/4W--5%---CF--T&R					R59 R60

7	30241118	1M	1/4W	1%	MF	AXL	R15 R78 R79 R82 R114 R115 R116
4	30320144	10UF	35V	20%	EL	RADH	C67 C68 C69 C70
16	30320181	22UF	50V	20%	EL	RAD	C5 C6 C7 C8 C10 C11 C12 C13 C20 C22 C27 C30 C31 C36 C39 C85
1	30320182	47UF	50V	20%	EL	RAD	C66
1	30320187	220UF	50V	20%	EL	RAD	C95
1	30320301	0.15UF	100V	5%	PES	RAD	C61
9	30320334	0.1UF	250V	10%	PE	AXL	C23 C24 C25 C26 C28 C29 C32 C33 C49
3	30320569	470PF	400V	20%	PP	RADH	C15 C16 C17
1	30320570	330PF	400V	20%	PP	RADH	C34
1	30320572	100PF	400V	20%	PP	RADH	C56
3	30320676	10UF	450V	20%	EL	RADIAL	C87 C90 C91
2	30330051	0.015UF	100V	5%	PE	RADH	C1 C3
2	30330115	0.033UF	50V	5%	PE	RAD	C71 C72
1	30330116	4700PF	50V	5%	PE	RAD	C4
1	30330117	6800PF	50V	5%	PE	RAD	C21
2	30330120	1500PF	50V	5%	PE	RAD	C40 C63
2	30330122	0.82UF	50V	5%	PE	RAD	C93 C94
1	30330128	0.22UF	50V	5%	PE	RAD	C42
3	30330129	0.1UF	50V	5%	PE	RAD	C54 C57 C86
1	30330130	3300PF	50V	5%	PE	RAD	C62
1	30330133	0.12UF	50V	5%	PE	RAD	C43
3	30330134	0.022UF	50V	5%	PE	RAD	C59 C60 C64
1	30330136	0.047UF	50V	5%	PE	RAD	C46
1	30330138	0.012UF	50V	2%	PP	RAD	C2

1	30330146	0.33UF 100V 5% PES RAD	C9
4	30330155	0.01UF 50V 5% PE RAD	C18 C19 C47 C48
3	30330156	1000PF 50V 5% PE RAD	C44 C45 C58
1	30330158	1UF 63V 5% PES RAD	C41
3	30330159	0.47UF 63V 5% PES RAD	C35 C53 C89
1	30340052	39PF 50V 5% NPO AXL	C88
4	30340056	180PF 50V 10% NPO AXL	C37 C50 C51 C52
2	30340057	270PF 50V 10% NPO AXL	C55 C92
16	30340100	0.1UF 50V 80-20% Z5U AXL	C73 C74 C75 C76 C77 C78 C79 C80 C81 C82 C83 C84 C96 C97 C98 C99
3	30340101	0.1UF 50V 10% X7R AXL	C14 C38 C65
1	30400337	LM337T ADJ VREG TO-220	U9
1	30405532	NE5532FE DUAL LN OPAMP	U3
1	30414560	4560 DUAL OPAMP DIP8	U10
6	30424560	4560 DUAL OPAMP SIP8	U1 U4 U5 U6 U7 U8
1	30450034	RED LED T1 BULK	D4
2	30450035	GRN LED T-1 BULK	D2 D3
1	30450036	YEL LED T1 BULK	D5
1	30450852	BLUE T1 LED BULK	D1
3	30460174	J174 JFET P 30V TO92 RAD	Q2 Q3 Q4
2	30463905	2N3904 TO92 NPN RADIAL	Q1 Q7
2	30463919	2N4401 NPN TO92 RAD	Q5 Q6
11	30464003	1N4003 200V 1A SI DIODE	D6 D13 D14 D15 D16 D17 D18 D19 D20 D21 D22
12	30464148	1N4148 75V 10MA DIODE	D7 D8 D9 D10 D11 D12 D23 D24 D25 D26 D27 D28

3	30600120	2C SPOX R/C ASSM. 6"	PLEFT PRIGHT PWHT
3	30806633	TUBE SKT 9PIN SNP CER 12AX7	V1 V2 V3
12	30900785	STND .250 T4-40,SW,AL,KN	HW2 HW3 HW4 HW5 HW6 HW7 HW8 HW9 HW10 HW11 HW12 HW13
1	30900915	SPCR,H,T4-40X1/4,SW,NK,KN	HW1
4	30901853	STND .937 T4-40,SW,AL,ST	HW14 HW15 HW16 HW17
9	31190094	50KW SNGL 45MM DET VER	VR7 VR8 VR9 VR10 VR11 VR12 VR13 VR14 VR15
1	31190301	1M20C SNGL 16MM SPD	VR3
1	31190303	1M20A SNGL 16MM SPD	VR5
1	31190305	1 MEG LINEAR MET SPIDER 1MM	VR2
1	31190311	1M5A SNGL 16MM SPD	VR17
1	31190334	250KB SNGL 16MM SPD	VR4
1	31190335	50KB SNGL 16MM SPD	VR1
1	31190336	10KB SNGL 16MM SPD	VR18
1	31190338	100K20A SNGL 16MM SPD	VR16
1	31190339	250K20A SNGL 16MM SPD	VR6
7	31322251	SWITCH DPDT PP 3.3MM PC V	S1 S2 S3 S4 S5 S6 S8
4	31322277	RELAY 12V DPDT .5A	S101 S102 S103 S104
1	31322322	SWITCH 2P4T ROTARY PC V	S7
1	31466214	2 TIP HID JACK NINS W/SPD	J1
2	33717010	8 HDR H SR .100" TIN LK	PPOST PPRE/SW
1	33719080	3 HDR H SR .100" TIN LK	PFBS
2	33719087	2 HDR H SR .156" TIN	PPRE-2 PPRE-3
1	33719158	6 HDR H SR .156" TIN LK	PPRE-1

END OF BILL OF MATERIAL REPORT